

Your reliable
partner for hygiene



Catalog 2023

Hand hygiene



DO YOU HAVE ANY QUESTIONS?

Our team is always there for you!

Your contact for general inquiries and cooperations:

Mr. Markus Struppe
Email: kontakt@euraneg.com
Tel. +49 (0) 8704 86 81

Ms. Dr. Sarah-Madeleine Ilmberger
Email: office@euraneg.com
Tel. +49 (0) 1765 7900 753

Your contact for sales:

Mr. Markus Struppe
Email: sales@euraneg.com
Tel. +49 (0) 8704 86 81

Ms. Tasja de Blanc
Email: sales@euraneg.com
Tel. + 49 (0) 1767 5897 563

Your contact for deliveries:

Ms. Beate Detterbeck
Email: lager@euraneg.com

The product photos are also available [digitally](#).

All dispensers comply with the DGKH/RKI guidelines and the Machinery Directive. We grant you a 6-month warranty on all dispensers in addition to the statutory 24-month warranty. The prices listed below are net and are valid up to and including 31.12.2023.

TABLE OF CONTENTS

I ABOUT US..... 7

II I OUR NOVELTIES FOR BETTER HYGIENE IN 20238

III TOUCHLESS SENSOR DISPENSERS 11

1.1 Touchless upright sensor dispensers (SD4000) 12

1.2 Spare parts and accessories (SD4000)..... 14

2. Pure 1 & Pure 2 (SD3100/SD3200)..... 18

3. Touchless overhead sensor dispensers (SD7000-SD7150)..... 20

3.1 Cube (SD7000)..... 23

3.2 Cube (SD7001/SD7002)..... 24

3.3 Mono (SD7100) 25

4. Touchless MINI sensor dispenser (SD3015)..... 27

4.1 Spare parts and accessories (SD3015)..... 28

IV MANUAL DOSING DISPENSERS 31

1.1 Manual upright arm lever dispensers (SD2005/SD2010)..... 32

1.2 Manual upright arm lever dispensers (SD2015)..... 34

1.3 Manual arm lever dispenser (stainless steel) (SD6000)..... 38

1.4 Robust arm lever dispenser (stainless steel) (SD6010)..... 39

1.5 Spare parts and accessories (SD2005/SD2010/SD2015/SD6000/SD6010)..... 40

2. Manual overhead dispensers (SD1015-SD1500)..... 44

3. Manueller MINI-dispenser (SD1015) 45

4. Push button dispensers - single and double (SD1400/SD1450)..... 46

5. Hand lever dispensers (SD1300/SD1350/SD1500)..... 47

V DISPENSERS FOR HYGIENE-PACKAGINGS..... 49

1. Upright dispensers for hygiene packagings (SD5050-SD5500)..... 50

2. Modular manual dosing dispensers (SD5050) 52

3. Manual arm lever dispensers (SD5100/SD5150)..... 53

4. Wall mount for hygiene packaging with arm lever/drip tray (SD5300)..... 54

5. Touchless sensor dispenser for hygienic packaging (SD5200)..... 55

6. Wall brackets single or double (SD5500/SD5550)..... 56

7. Bed or wall brackets (SD5400/SD5450)..... 57

VI SANITIZER STANDS, HYGIENE TOWERS & COUNTER DISPLAYS 59

1. Sanitizer stands (SD100) 62

2. Sanitizer stands (SD120) 63

3. Sanitizer stand (SD110/SD110-b) 64

4. Hygiene tower with foot control (SD115/SD115-b) 65

5. DESI-SÄULE stand (SD140) 66

6. DESI-ON-TOP stand (SD150)..... 67

7. Sanitizer stand (SD130)..... 68

8. Counter displays (SD200/SD210) 69

VII TERMS AND CONDITIONS 70

WHAT IS IMPORTANT TO US

We are frank and open-minded, which means that we are committed to our tasks and accept changes. Your request is our challenge to take on responsibility and to improve ourselves.

Our customers are our partners, accompanied by the beginning of delivering the best value. We listen to your needs to find better solutions and increase our service at a higher level because our joint efforts make our work important.

OUR VALUES

Commitment and quality. We are committed to the requirements of our customers. We don't just want to meet your expectations, we want to exceed them with high-quality products and service. The core of our work is commitment and solidarity to our colleagues and partners that built-in quality.

Integrity and reliability. Acting honestly and respectfully, keeping our word without resentment is what makes us a reliable partner. We keep our positive attitude-even in difficult times.

For more than ten years, Euraneg has been a leading developer and manufacturer of hygienic solutions. We hold international patents for various pump technologies and dispenser systems. Our innovations are always oriented towards customer needs. While implementing new regulatory requirements such as hygiene guidelines, flexibility, and customer orientation are of great importance to us.

Euraneg is a long-standing supplier to the German hygiene industry. As a "White Label" partner, we develop exclusive, tailor-made solutions for other companies within the scope of customizing. Thanks to our wide range of printing and color options, our products can be customized according to customer requirements. That also includes creative design concepts, with which we keep our product range attractive beyond the classic applications in the hospitals, but for many other industries such as retail, hospitality, education, etc.

We are constantly working to be better and faster in our field. To push the boundaries of classical disinfection, we foster innovation and competitiveness. Euraneg is a company with a big mission to make a decisive contribution to public health together with you.

OUR LOCATIONS

Our high-quality standards ensure that you will find the best possible solution for your needs in our wide range of innovative hygiene products. Our products are produced of the best german quality from Bavaria and worldwide locations in China and Taiwan.

GERMANY

CHINA

TAIWAN

Your reliable partner for hygiene

Our novelties for better hygiene in 2023

Hand hygiene has never been more important, and we have never been more eager to conquer the upcoming challenges. We tried to respond not only to the challenges of the current pandemic situation but also to make a difference through creative ideas and innovation to surpass conventional standards and provide important solutions for the hygiene market.

The focus is on the user, modern design as well as on high-quality hygiene available everywhere. We prepared for you a lot of novelties on the next pages, and some of them we wanted to show you here. First of all, we want to introduce our SD2015-Multi.Use. This dispenser, made in German quality in Bavaria, is an improved, multifunctional version of our existing arm lever dispenser that sets a new standard like no other product in that field. In addition to EURO-bottles from various manufacturers in different volumes, the Multi.Use is suitable for hygiene packages too. It can dispense foam, discrete jet, and spray via its various pump variants.

The design can be customized in different ways with colored arm levers and drip trays, as well as logo printing. We made one more improvement by making this dispenser lockable.



SD2015
For more information about this product, check page 34

With the Touchless Cube series (SD7000), we give an elegant answer to the customer's request for design, and hygiene. The dispenser made of brushed stainless steel is refillable and easy to use. Besides a silver-colored housing, the dispenser is also available in various colors and shapes. The display provides information about the filling level, time, and temperature and perfectly fits its place either by wall mounting or as a standalone device.



SD7000
For more information about these products, check pages 20-23

Our SD3100 comes in a cylindrical shape with a puristic design. It is simple in its design, completely touchless, and can dispense fine foam. The SD3100 is ergonomically optimized and sustainable with its refillable container. It can be used for disinfection as well as for soap.

SD3100
For more information about this product, check page 18



Covid19 increased the importance of aseptic cleanliness at any location. Our flexible dispensing options encourage hand hygiene compliance for patients, visitors, and staff everywhere. Their main characteristic is a flexible choice of location and mobility. Our sanitizer stands and hygiene towers enable you to put our dispensers everywhere. For high frequented places, we offer sanitizer stands with exchangeable containers and integrated liquid tanks with a capacity of 5 to 20 liters.

The sanitizer stands operate with an arm lever or touchless dispenser. Additionally, we offer foot-operated models with integrated pump for all sizes of exchangeable containers. What makes them special is the possibility to use the display area for branding or advertisement. The sanitizer stands come in different materials such as metal, acrylic, and HPL in various colors.

Those are just a few new products, and much more you can find on the following pages. Through our products, we tried to find better answers to hygienic demands. We hope that we did it successfully and that you will find your favorites. We are proud of the work and solutions that we made this year, and we won't stop on this. We will keep on going to provide you even better solutions, to receive your suggestions, keep up with hygienic demands, and finally to convert them into valuable products.

Thank you for being with us!

SD100-SD200
For more information about these products, check pages 58-65





TOUCHLESS SENSOR DISPENSERS

Completely contactless. For even better hygiene.

TOUCHLESS UPRIGHT SENSOR DISPENSERS

SD4005/SD4010

The SD4000 touchless series is our flagship among the sensor dispensers and enables even better hygiene. We offer this bestseller in two versions: the SD4005 is able to carry from 250ml to 500ml EURO-bottles and SD4010 for EURO-bottles from 500ml to 1000ml. What makes it exceptional is its functionality and a unique patented roller pump. Both can be used for low-viscosity disinfectants and gels, as well as for liquid soaps and lotions.

The application of the liquids is carried out as a jet or a spray. According to your needs, you can choose between four different dosages from 1.6ml to 6.4ml.

The series is available completely in white but also in combination with colored drip trays (gray, blue, green, pink, white). That gives you the opportunity to make different variations of the dispenser as well as to distinguish different liquids by colors. Due to their front window at the front cover, the current fill level and the used liquid are always visible. The SD4005 and the SD4010 touchless dispensers are suited for wall mounting, drilled or glued, and stand-alone.

The series is therefore good for highly frequented places where minimum contact is needed. In combination with an elegant stand, it can be a real eye-catcher! For even better results, there is an upgrade for hygiene monitoring.



Number 1 among the sensor dispensers

- 4 x AA batteries with a guaranteed runtime of at least 20 000 cycles
- Four adjustable volumes (from 1.6ml to 6.4ml)
- Individually packed in polybag and cardboard box with drip tray, batteries, and mounting material, spare pump, operating instructions with stickers "Soap" and "Disinfection"
- For wall mounting or as a stand-alone

Item No.	EAN	Description	WxHxD in mm	RRP
SD4005-w	8719992814213	Touchless automatic dispenser for 500ml EURO bottles (white)	150x268x205	99,00€
SD4005-c	8719325697001	Touchless automatic dispenser for 500ml EURO bottles (white) with colored drip tray (green, blue, pink)	150x268x205	101,00€
SD4010-w	8719992814398	Touchless automatic dispenser for 1000ml EURO bottles (white)	150x296x235	109,00€
SD4010-c	8719992814848	Touchless automatic dispenser for 1000ml EURO bottles (white) with colored drip tray (green, blue, pink)	150x296x235	111,00€

OUR BESTSELLER

TWO SIZES OF DISPENSERS

THE UPRIGHT SYSTEM COMBINED WITH EURO-BOTTLES

ENERGY EFFICIENT

SPARE PARTS AND ACCESSORIES

SD4005/SD4010

DISPOSABLE JET AND SPRAY ROLLER PUMP

Our innovative and patented disposable roller pump is not only easy to replace but also energy-efficient. You can choose between the jet stream and spray mist pump.
For the best hygienic results, we recommend the exchange of the pump with every bottle change, at the latest after three months of use.

Hose length SD4005-10: 230mm
Hose length SD4010-10: 280mm



Item No.	EAN	Description	RRP
SD4005-10	8719992814237	Disposable jet roller pump (for 500ml) 2 rollers	6,00€
SD4005-11	8719325697735	Disposable jet roller pump (for 500ml) 3 rollers	6,00€
SD4005-10-VE4	8719325697070	Disposable jet roller pump (for 500ml) 4-container, 2 rolls	24,00€
SD4010-10	8719992814411	Disposable jet roller pump (for 1000ml) 2 rollers	6,00€
SD4010-11	8719325697759	Disposable jet roller pump (for 1000ml) 3 rollers	6,00€
SD4010-10-VE4	8719325697087	Disposable jet roller pump (for 1000ml) 4-container, 2 rolls	24,00€
SD4005-15	8719325697742	Disposable spray roller pump (for 500ml) 3 rollers	5,00€
SD4010-15	8719325697766	Disposable spray roller pump (for 1000ml) 3 rollers	5,00€

FRONT COVER AND WINDOW

For our dispensers of the SD4000 series, you can order the cover and the window as spare parts. The mounting is done simply by putting it on.



Item No.	EAN	Description	WxHxD in mm	RRP
SD4005-30	8719992814305	Front cover (for 500ml)	262x88x3	6,00€
SD4010-30	8719992814480	Front cover (for 1000ml)	287x91x3	6,00€
SD4005-35	8719992814312	Window (for 500ml)	105x53x3	2,00€
SD4010-35	8719992814558	Window (for 1000ml)	130x61x3	2,00€

DRIP TRAY

The drip trays for 500ml and 1000ml touchless dispensers are keeping the place clean by catching the dripping liquid. Mounting is carried out by simply inserting the tray into the holders provided in the front cover. They are delivered in plastic packaging and are available in: gray, white, blue, green, and pink.



Item No.	EAN	Description	WxHxD in mm	RRP
SD4005-20-b	8719992814282	Drip tray blue (for 500ml) cone: length 28mm, distance 35mm	150x20x99	4,00€
SD4005-20-d	8719992814244	Drip tray grey (for 500ml) cone: length 28mm, distance 35mm	150x20x99	4,00€
SD4005-20-g	8719992814268	Drip tray green (for 500ml) cone: length 28mm, distance 35mm	150x20x99	4,00€
SD4005-20-p	8719992814275	Drip tray pink (for 500ml) cone: length 28mm, distance 35mm	150x20x99	4,00€
SD4005-20-w	8719992814251	Drip tray white (for 500ml) cone: length 28mm, distance 35mm	150x20x99	4,00€
SD4010-20-b	8719992814442	Drip tray blue (for 1000ml) cone: length 18mm, distance 19mm	150x20x106	4,00€
SD4010-20-d	8719992814428	Drip tray grey (for 1000ml) cone: length 18mm, distance 19mm	150x20x106	4,00€
SD4010-20-g	8719992814459	Drip tray green (for 1000ml) cone: length 18mm, distance 19mm	150x20x106	4,00€
SD4010-20-p	8719992814466	Drip tray pink (for 1000ml) cone: length 18mm, distance 19mm	150x20x106	4,00€
SD4010-20-w	8719992814435	Drip tray white (for 1000ml) cone: length 18mm, distance 19mm	150x20x106	4,00€
SD4005-20-k	8720254509389	Cardboard packaging		1,00€

EURO-BOTTLES AND BOTTLE LOCK

Our dispensers are always delivered without bottles.
For customers who need a bottle, we offer EURO standard bottles with 500ml or 1000ml volume. The bottles are made of white plastic, odorless, and refillable.
The bottle lock in the housing ensures the safe positioning of the bottle.



Item No.	EAN	Description	RRP
SD2005-40	8719992814640	500ml EURO-bottle	2,00€
SD2010-40	8719992814657	1000ml EURO-bottle	2,00€
SD4005-45	8719992814350	Bottle lock for SD4005, SD4010; SD2015, SD6000, SD5300	2,00€
SD4010-42	8719325697230	Rubber and centering device for bottleneck for SD4010	2,00€

MOUNTING SET AND WALL MOUNTING PLATE

For mounting the dispensers on walls or sanitizer stands, we offer our wall mounting plate as well as two mounting sets. One is a mounting set for drilling (3x screws, 3x dowels, and 3x washers), and another is a mounting set for gluing with two Tesa adhesive hooks. The mounting plate enables easy mounting, and easy cleaning or replacement of the dispenser by sliding it on the wall mounting plate.



Item No.	EAN	Description	RRP
SD2005-70	8719325697094	Wall mounting plate for SD2005, SD4005	2,00€
SD2010-70	8719992814787	Wall mounting plate for SD2010, SD2015, SD4010	2,00€
SD4005-75	8719992814527	Mounting set for drilling for SD4005, SD4010	1,00€
SD2005-78	8719325697186	Tesa adhesive mounting set "No more drilling" for SD2005, SD2010, SD2015, SD4005, SD4010, SD5300, SD6000	7,00€

BATTERIES, BATTERY COMPARTMENT COVER, KEY, AND SPARE LOCK

The accessories: 4 x AA spare batteries, battery compartment cover, key, and lock are suitable for both dispenser sizes.



Item No.	EAN	Description	RRP
SD4005-80	8719992814510	VARTA batteries, size AA (4 pieces)	2,00€
SD4005-85	8719992814565	Battery compartment cover	2,00€
SD4005-50	8719992814589	Key	1,00€
SD4005-55	8719992814572	Lock for SD4005	1,00€
SD4010-55	8719325697247	Lock for SD4010	1,00€

DISPENSER UPGRADE FOR GWA HYGIENE MONITORING

- The digital Hygiene Manager enables you:
- Hardware upgrade for your dispenser
 - Hygiene control, usage rates, and dosing quantities
 - Fill level indicator - the most important facts quickly and clearly arranged on the included dashboard
 - Nosoex compatibility



Item No.	EAN	Description	RRP
SD4005-100	8719992814220	GWA Hygiene Monitoring upgrade for the dispenser	Upon request

Smart Dispenser + Monitoring different job groups = Reduce the risk of infection

- Provides information about the actual disinfection behavior in your facility:
 - Compliance with minimum quantities
 - Check fill levels and optimize refill processes
 - Consumption quantity per employee and patient day
- Supports the prevention of hospital acquired infections (HAI), known as a nosocomial infection
- Compliance monitoring made easily

HYGIENE-MONITORING
makes your dispenser smart

PURE 1 & PURE 2

SD3100/SD3200

The SD3100 Pure 1 and the SD3200 Pure 2 are two perfectly shaped, battery-operated “touchless” dispensers made of white ABS plastic. The Pure 1 is classically flat, while the sister model, with its inclined lid, has a slightly more dynamic look. Both are foam dispensers with unscrewable containers that can be filled with 350ml soap.

Pure 1 comes with an exchangeable recyclable cartridge system for which we offer different sustainable soaps. On the other hand, Pure 2, has a refillable container, which can be reused with various soaps and disinfection. Pure 2 is available either with a foam or a spray pump. Both dispensers are practical to use, easy to maintain, and sustainable. Their usage can be maintained in many different places that take care of simplicity, sustainability, and cleanness. With our optional wall bracket, we offer a space-saving and simple wall mounting option.

- Dispenses foam without dripping
- 4 x AAA batteries for 20 000 cycles
- Sustainable container with 350ml filling volume
- Individually packed in a cardboard box with batteries and operating instructions
- For optional wall mounting or as a stand-alone

MODERN UPRIGHT DESIGN

CARTRIDGE OR REFILLABLE

FOAM DISPENSER



PURE 1
SD3100

PURE 2
SD3200

Simple, compact and modern design

Item No.	EAN	Description	WxH in mm	RRP
SD3100	8719325697469	Pure 1	98x190	25,00€
SD3100-40	8719325697711	Soap cartridge	73x89,74	5,00€
SD3100-41	8719325697728	Disinfection cartridge	73x89,74	5,00€
SD3200	8719325697704	Pure 2 Foam	105x208	25,00€
SD3201	8719325697209	Pure 2 Spray	105 x208	25,00€
SD3100-70	8719992814534	Wall bracket		6,00€

TOUCHLESS OVERHEAD SENSOR DISPENSERS

SD7000/SD7001/
SD7002/SD7100

The SD7000 series is our stylish answer to hygienic requirements. This series of dispensers, made of brushed stainless steel or color coated steel, is multifunctional, refillable, and easy to operate. The SD7000 series is made for those who like to be stylish and modern in all aspects of their work, as well as in hygiene.

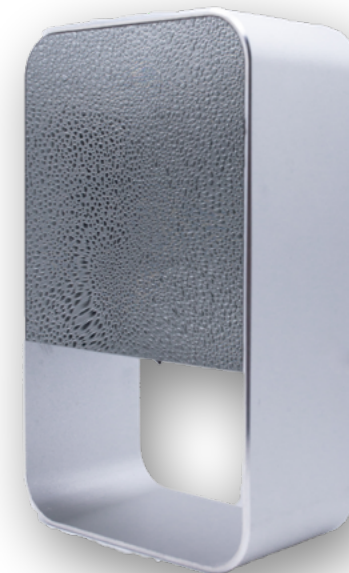
Besides the hygienic purpose, some of the dispensers have an integrated screen that shows time, temperature, and current filling level. This series of dispensers are available in different colors and shapes for wall mounting or as a stand-alone device. They are equipped either with a reusable container for a refill or can be refilled with a pouch system. This series can be used either with disinfectant or liquid soaps with jet pump. Depending on the dispenser, the filling volume can vary from 500ml to 700ml.

With its design, this series fits perfectly in hotel lobbies, restaurants, business premises, etc. This series is a seductive reminder to take a little time for maximum hygiene.

STYLISH & COMPACT

REFILLABLE

OVERHEAD



SD7000



SD7001



SD7002



SD7100

CUBE SERIE

SD7000/SD7001/SD7002

- Robust and elegant at the same time
- Stainless steel housing with rounded corners and integrated drip tray
- Fully mirrored display: with integrated time, temperature, and fill level display
- Can be wall-mounted or used as a standalone unit
- Wall mounting: screws and dowels or adhesive
- For low-viscosity disinfectants, gel, liquid soap, or lotion
- Refillable HIPE plastic container with 500ml capacity - leakproof
- Five different dosages (adjustable in 0.5 ml steps from 0.5 ml to 2.5 ml)
- All electronic components are sealed for safe use
- Available in different colors: stainless steel, black, blue, red, and pink

WALL-MOUNTED OR FLOOR STANDING
DIFFERENT SHAPES AND COLORS
REFILLABLE OR POUCH SYSTEM



CUBE DISPENSER FAMILY FOR WALL MOUNTING OR AS A STAND-UP DEVICE

CUBE NX

SD7000

The Cube NX inspires with its clean design and integrated form. Ideally suited as a standalone unit on a counter or tables in lobbies, receptions, restaurants, or offices. It is available in two colors: silver (brushed) and black.



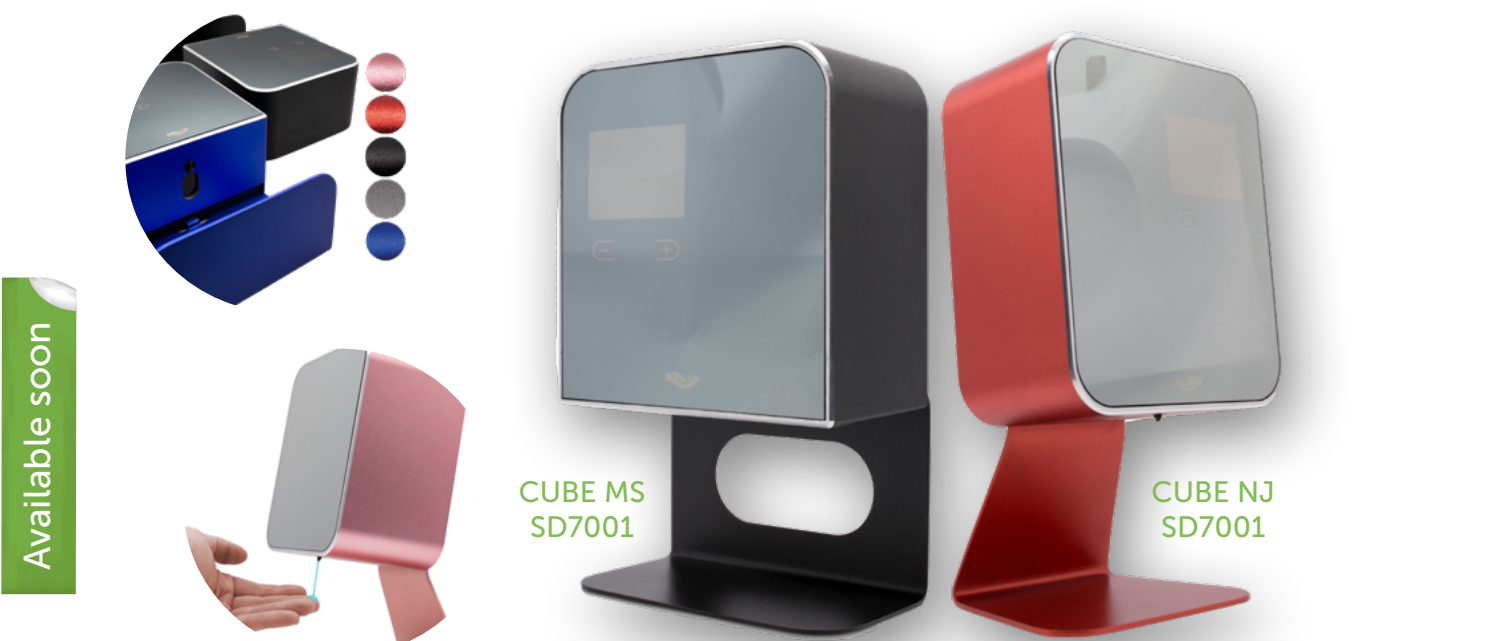
Available soon

Item No.	EAN	Description	WxHxD in mm	RRP
SD7000-d	8719325697551	Cube NX brushed	270x145x90	99,00€
SD7000-s	8719325697353	Cube NX black	270x145x90	99,00€
SD7000-10	8719325697223	Jet Pump		4,00€
SD7000-75	8719325697100	Mounting set		2,00€

CUBE NJ & CUBE MS

SD7001/SD7002

The Cubes NJ and MS are design variants of the Cube NX. The NJ floats freely on a square base that extends the cuboid to a rectangular shape but does not form a disinfection chamber as with the NX. It is best suited for mounting on the wall or a sanitizer stand. The MS has a square appearance with its four rounded corners. Its slightly beveled design, which is directed towards the user, accentuates its many display functions even more clearly. Besides black and silver, these two dispensers are also available in blue, red, and pink.



Item No.	EAN	Description	WxHxD in mm	RRP
SD7001-d	8719325697391	Cube NJ brushed	255x150x110	99,00€
SD7001-b	8719325697384	Cube NJ blue	255x150x110	99,00€
SD7001-p	8719325697377	Cube NJ pink	255x150x110	99,00€
SD7001-r	8719325697360	Cube NJ red	255x150x110	99,00€
SD7001-s	8719325697407	Cube NJ black	255x150x110	99,00€
SD7002-d	8719325697445	Cube MS brushed	255x150x110	99,00€
SD7002-b	8719325697438	Cube MS blue	255x150x110	99,00€
SD7002-p	8719325697421	Cube MS pink	255x150x110	99,00€
SD7002-r	8719325697414	Cube MS red	255x150x110	99,00€
SD7002-s	8719325697452	Cube MS black	255x150x110	99,00€

MONO

SD7100

The Mono and Pillar are our offerings for overhead touchless refill dispensers. The brushed, cylindrical stainless steel housing is sturdy and stylish. The leak-proof HIPE plastic container has a filling volume of 700ml and is suitable for low viscosity disinfectants, gels, soaps, or lotions. Two different pumps are available: jet or foam. The dosing quantity can be adjusted in five steps, from 0.5 ml to 2.5 ml. For safe use, all electronic components are sealed watertight.



Item No.	EAN	Description	WxHxD in mm	RRP
SD7100-d	8719325697162	Mono (brushed stainless steel) with jet pump	223x110x100	79,00€
SD7100-d-2	8719325697254	Mono (brushed stainless steel) with foam pump	223x110x100	79,00€
SD7100-s	8719325697285	Mono (black) with jet pump	223x110x100	79,00€
SD7100-s-2	8719325697292	Mono (black) with foam pump	223x110x100	79,00€
SD7100-w	8719325697261	Mono (white) with jet pump	223x110x100	79,00€
SD7100-w-2	8719325697278	Mono (white) with foam pump	223x110x100	79,00€
SD7100-30	8719992814381	Housing cover (black) for Mono	223x110x100	4,00€
SD1015-20	8719992814152	Drip tray with mounting set	140x75x130	4,00€
SD3015-75	8719992814541	Mounting set		1,00€

TOUCHLESS MINI SENSOR DISPENSER (ABS)

SD3015

Our Touchless Mini Sensor Dispenser impresses with its striking functionality and its clean, minimalist design. With the SD3015 we offer an overhead system for different bottle types and volumes. It is suitable for EURO-bottles as well. To ensure compatibility with the different bottleneck diameters of the many soaps and disinfectants (Sterilium, Aseptoman, Softa-Man, Skinman, etc.), we offer the pumps with several diameters (28mm and 32mm) or with adapters.

- 4 x AA batteries for 30 000 cycles
- Four adjustable dosages (from 1.6ml to 6.4ml)
- Exclusively for wall mounting (fixing material included, lockable)
- Individually packed in polybag and cardboard box
- Drip tray, disposable pump for 28mm or 32mm bottle threads as well as adapters for other bottle threads are available individually



Modern dispenser with replaceable bottles

SIMPLE & COMPACT
OVERHEAD
DIFFERENT BOTTLE SIZES

Item No.	EAN	Description	WxHxD in mm	RRP
SD3015	8719992814008	Touchless MINI automatic dispenser for various bottle sizes	100x75x150	70,00€

SPARE PARTS AND ACCESSORIES

SD3015

PLASTIC DISPOSABLE PUMP

We offer plastic disposable pumps for the MINI Sensor Dispenser with several diameters. For the highest hygiene standards, we recommend a regular replacement of the pump with each bottle change, at least every three months.



Item No.	EAN	Description	RRP
SD3015-10	8719992814169	Detachable vacuum plastic disposable pump for bottleneck Ø 28mm e.g. Rheosol	3,00€
SD3015-15	8719992814176	Detachable plastic disposable pump with air intake for bottleneck Ø 28mm e.g. Rheosol	3,00€

ADAPTER FOR DIFFERENT BOTTLENECK DIAMETERS AND DRIP TRAY

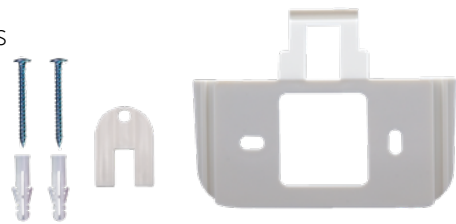
The adapters allow compatibility of the dispenser with different bottleneck diameters of the various disinfectant manufacturers. The drip tray for the MINI Sensor Dispenser catches liquids dripping from hands. The drip tray is going under the MINI dispenser with an additional holder.



Item No.	EAN	Description	WxHxD in mm	RRP
SD3015-19	8719992814145	Adapter set - pack of four adapters		15,00€
SD3015-19-1	8719992814107	Adapter for bottleneck diameter 24-25mm		4,00€
SD3015-19-2	8719992814114	Adapter for bottleneck diameter 26-27mm		4,00€
SD3015-19-3	8719992814121	Adapter for bottleneck diameter 28-30mm		4,00€
SD3015-19-4	8719992814138	Adapter for bottleneck diameter 31-32mm		4,00€
SD1015-20	8719992814152	Drip tray with mounting set	140x75x130	4,00€

MOUNTING SET, KEY, AND WALL MOUNTING PLATE

The mounting set consists of 2x screws, 2x dowels, and 2x washers for mounting the MINI Sensor Dispenser. The key is used for opening the dispenser, and the wall mounting plate is for mounting the dispenser on the wall. After assembling the wall mounting plate, dispensers can be exchanged by simply sliding them on.



Item No.	EAN	Description	RRP
SD3015-70	8719992814015	Wall mounting plate	2,00€
SD3015-75	8719992814541	Mounting set	1,00€
SD4005-50	8719992814589	Key	1,00€

BOSTON ROUND BOTTLE

The Boston round bottle 250ml, transparent or opaque, can be delivered with the print "soap" or "disinfection" or without. The bottle fits with our 28mm pump and is placed upside down in the MINI Sensor Dispenser.



Item No.	EAN	Description	RRP
SD3015-40	8719992814367	Boston bottle transparent without print	2,00€
SD3015-41	8719325697025	Boston bottle transparent with imprint "Soap"	3,00€
SD3015-42	8719325697032	Boston bottle transparent with imprint "Disinfection"	3,00€
SD3015-45	8719325697049	Boston bottle opaque without print	2,00€
SD3015-46	8719325697056	Boston bottle opaque with imprint "Soap"	3,00€
SD3015-47	8719325697063	Boston bottle opaque with imprint "Disinfection"	3,00€

BATTERIES AND BATTERY COMPARTMENT

Batteries and battery compartment cover for the MINI touchless dispensers as spare parts. 4 x AA batteries for at least 30 000 cycles.



Item No.	EAN	Description	RRP
SD3015-85	8719992814022	Batteriefach	3,00€
SD4005-80	8719992814510	VARTA-Markenbatterien, Größe AA (4 Stück)	2,00€



MANUAL DOSING DISPENSERS

Classics in different shapes and materials

MANUAL UPRIGHT ARM LEVER DISPENSERS (ABS)

SD2005/SD2010

The SD2005/SD2010 arm lever dispensers are made from impact-resistant white ABS plastic. We offer this bestseller in two versions: SD2005 for 500ml and SD2010 for 1,000ml Euro-bottles. With an accessory adapter, you can use the one-way Ophardt DHP pump. All types of disinfectants, liquid, soaps, massage oils, and lotions can be used in different dosages (0.8ml, 1.2ml, and 1.8ml) with our jet, spray, or foam pumps. The selectable dosage ensures optimal hand hygiene and care.

The SD2005 and SD2010 are available completely in white but also in combination with colored arm levers and drip trays in blue, green, grey, and pink. The SD2005 and SD2010 are suitable for wall mounting or on a sanitizer stand. That allows you to make a different variation of the dispenser, as well as to distinguish different liquids by colors. Due to their window at the front cover, the current fill level and the used liquid are always visible. We also offer customizations of the dispenser, for example, logo or text imprints. Individually packed in a cardboard box with mounting material, wall mounting plate, arm lever, drip tray, pump, and operating instructions with stickers "soap" and "disinfection". The adhesive mounting set is available as an option for mounting.

- Adjustable dosage
- Two sizes; different colors
- For wall mounting or as a stand-alone



Customizable and robust dispenser

THREE TYPES OF PUMPS

DIFFERENT COLORS

EURO-BOTTLES

Item No.	EAN	Description	WxHxD in mm	RRP
SD2005-w	8719992814602	Manual arm lever dispenser for 500ml EURO-bottles (white)	150x280x190	34,00€
SD2005-c	8719992814473	Manual arm lever dispenser for 500ml EURO bottles (white) with colored arm lever and colored drip tray (gray, blue, green, pink)	150x280x190	35,00€
SD2010-w	8719992814756	Manual arm lever dispenser for 1000ml EURO-bottles (white)	150x325x215	35,00€
SD2010-c	8719992814732	Manual arm lever dispenser for 1000ml EURO bottles (white) with colored arm lever and colored drip tray (gray, blue, green, pink)	150x325x215	36,00€

MANUAL UPRIGHT ARM LEVER DISPENSER

SD2015

NEW

The SD2015 Multi.Use is our new multifunctional arm lever dispenser produced in best German quality. It can be used for both 500ml and 1000ml EURO-bottles of all disinfectants, liquid soaps, lotions, and massage oils. There are various Euraneg pumps such as foam, spray and jet available as well as the Ophardt disposable DHP pump. There is a possibility to select a dosing quantity that ensures optimal hand hygiene and care. Thanks to a new type of fixations, different hygiene packagings can be used in the Multi.Use. Individual customization with logo or text prints and color combinations of the arm levers and drip trays is possible. That allows you to make a different variation of the dispenser as well as to distinguish different liquids by colors. Through the opening at the front cover, the current fill level and the used liquid are always visible.

This dispenser meets the highest hygiene requirements of hospitals or nursing homes, as well as the customer demands in the hotel industry, gastronomy, retail trade, public places, and schools. Our wish was to put the functionalities of more dispensers in one and to create a multifunctional dispenser. That is why this dispenser is called "Multi. Use", which means that it can be adapted to changing requirements and hygiene-regulations. Individually packed in a cardboard box with mounting material, wall mounting plate, pump, and operating instructions with stickers "soap" and "disinfection".

- Adjustable dosage; different colors
- One fits all packagings
- For wall mounting or as a stand-alone



The Multi.Use

Item No.	EAN	Description	WxHxD in mm	RRP
SD2015-w	8719325697643	Manual arm lever dispenser for 500 and 1000ml EURO-bottles (white) Basis (bulk packing in polybag 20 pcs in a box, without pump, wall mounting plate, and stickers)	150x350x218	25,00€
SD2015-z	8719992814084	Manual arm lever dispenser for 500 and 1000ml EURO-bottles (white) Standard (as base plus wall mounting plate, jet pump and "disinfection" & "soap" stickers)	150x350x218	33,00€
SD2015-c	8719325697650	Manual arm lever dispenser for 500 and 1000ml EURO-bottles (white) Customized (as standard, instead of pump adapter (Ophardt or fixation of hygienic packing is enclosed)	150x350x218	34,00€

MANUAL UPRIGHT ARM LEVER DISPENSER

SD6000/SD6010

NEW

Hand hygiene in public areas, in representative or highly frequented places requires dosing dispensers in a robust design with an attractive and valuable design. Therefore for the new Euraneg arm lever dispensers of the SD6000 series are made from exclusively materials such as aluminum or stainless V2A chrome-nickel steel (1.4301) and the production takes place 100% in Germany.

For the SD6000 series, we have used the Multi.use concept known from the SD2015, we have adopted the Multi.use concept. No matter which bottle volume(s) or dispensing form(s) (jet, foam, spray) is required, these dispensers meet the highest clinical requirements of hospitals or nursing homes, as well as the hygiene requirements in the hotel and catering industry, retail trade, authorities and schools.

The exchange of liquids is easily, quickly, safely and in compliance with guidelines by changing the 500ml to 1000ml EURO bottles of all disinfectant manufacturers. Thanks to a new type of fixation, various disposable hygiene packs can also be used. It can be used with optional pump holder for Ophardt pumps or DHP disposable pumps. The selectable dosage (0.8; 1.2; 1.8 ml) ensures optimal hand hygiene and care. With special logo imprints, different material and color combinations for drip trays, as well as optional lockable caps for the bottles, the dispensers can be further customized. The SD6000 series consists of two models: SD6000 and SD6010.



DIFFERENT BUNDLES AND PUMPS

UPRIGHT SYSTEM

MADE IN GERMANY

MANUAL ARM LEVER DISPENSER FROM STAINLESS STEEL

SD6000

Manual arm lever dispenser made of stainless steel in upright design for EURO bottles (500-1000ml) of all soap and disinfectant manufacturers. This robust disinfectant dispenser is equipped with an arm lever, which allows you to easily trigger the pump mechanism with your forearm or elbow.

- Meets all requirements of the Robert Koch Institute for hygiene standards in the health care sector
- Housing lockable and easy to clean
- Suitable for use with disinfectants, disinfectant gels, soaps, massage oils or even lotions
- Easy pump change from the front by removing the pump nose cover. Dispenser does not have to be removed from the wall
- Can be used with plastic piston stroke pump in three application variants: Jet stream, foam or spray mist
- Three different dosing quantities of 0.8ml, 1.2ml or 1.8ml adjustable
- Optional: Bottle end panel available in four variants: with/without stainless steel drip tray, with large/small viewing window, three arm lever variants, adapter for use with Ophardt pumps, adhesive mounting set



Item No.	EAN	Description	WxHxD in mm	RRP (netto)
SD6000-w	8719325697957	Stainless steel arm lever dispenser (without bottle end panel) with plastic arm lever	100x365x198	89,00€
SD6000-c	8720254509785	Manual dispenser made of stainless steel with arm lever made of stainless steel or wire	100x365x210	91,00€
SD6000-30	8719325697971	Bottle cover with large oval viewing window		20,00€
SD6000-31	8720254509693	Bottle cover with narrow vertical viewing window		20,00€
SD6000-32	8720254509709	Bottle cover with large oval viewing window with integrated stainless steel drip tray		29,00€
SD6000-33	8720254509716	Bottle closure panel with narrow vertical viewing window with integrated stainless steel drip tray		29,00€
SD6000-40-d	8720254509723	Colored plastic cover for the pump outlet (gray)		3,00€
SD6000-90	8719992814206	Arm lever for SD6000 from bent wire		6,00€
SD6000-91	8720618323064	XXL arm lever for SD6000 and SD6010		6,00€

ROBUST STAINLESS STEEL ARM LEVER DISPENSER

SD6010

Robust arm lever dispenser “Multi-Use” made of stainless steel in upright design for EURO bottles (500-1000ml) of all soap and disinfectant manufacturers. You know our plastic arm lever dispenser SD2015 Multi-Use? The SD6010 Multi-Use is the sister or brother model in stainless steel design. The SD6010 comes already in the basic equipment with drip tray and offers the perfect total package among the stainless steel dispensers. This robust disinfectant dispenser is equipped with an arm lever, through which the pump mechanism can be easily operated with your forearm or elbow.

- Meets all requirements of the Robert Koch Institute for hygiene standards in the health care sector
- Housing lockable and easy to clean
- Suitable for use with disinfectants, disinfectant gels, soaps, massage oils or even lotions
- Easy pump change from the front by removing the pump nose cover. Dispenser does not have to be removed from the wall
- Can be used with plastic piston stroke pump in three application variants: Jet stream, foam or spray mist.
- Removable plastic drip tray integrated in the dispenser and already included in the scope of delivery. Drip trays such as pump cover are also available in gray, green, blue and pink
- Optional: Bottle end panel available in two variants: with large/small viewing window, three arm lever variants, adapter for the use of Ophardt pumps, adhesive mounting set



Item No.	EAN	Description	WxHxD in mm	RRP (netto)
SD6010-w	8720254509730	Arm lever dispenser (without cover) with plastic arm lever and drip tray	150x365x198	69,00€
SD6010-c	8720254509792	Arm lever dispenser (without bottle cover) with arm lever made of stainless steel or wire	150x365x210	71,00€
SD6010-30	8720254509747	Bottle cover with large oval viewing window for SD6010		20,00€
SD6010-31	8720254509754	Bottle cover with narrow vertical viewing window		20,00€
SD6000-40-d	8720254509723	Colored plastic cover for the pump outlet (gray)		3,00€
SD6000-90	8719992814206	Arm lever for SD6000 from bent wire		6,00€
SD6000-91	8720618323064	XXL arm lever for SD6000 and SD6010		6,00€

SPARE PARTS AND ACCESSORIES

SD2005/SD2010/SD2015/SD5300/
SD6000/SD6010

PLASTIC DISPOSABLE PISTON STROKE PUMP

We offer our robust piston stroke pump in four versions as jet, spray, or foam pump, as well as the Ophardt DHP disposable pump. For maximum hygiene, we recommend replacing the pump with every bottle change, at the latest after three months of use. All pumps can be used in the following dispenser models: SD2005, SD2010, SD2015, and SD6000.



Item No.	EAN	Description	Length in mm	RRP
SD2005-10	8719992814619	Plastic disposable piston stroke pump for jet stream (500ml)	198	6,00€
SD2005-11	8719992814336	Disposable piston lift pump for spray (500ml)	198	6,00€
SD2005-12	8719992814343	Disposable piston lift pump for foam (500ml)	198	8,00€
SD2005-13	8719325697568	Ophardt DHP-one-way piston stroke pump (500ml)	198	4,00€
SD2010-10	8719992814763	Plastic disposable piston stroke pump for jet stream (1000ml)	238	6,00€
SD2010-11	8719992814855	Plastic disposable piston pump for spray mist (1000ml)	238	6,00€
SD2010-12	8719992814862	Disposable piston lift pump for foam (1000ml)	238	8,00€
SD2010-13	8719992814961	Ophardt DHP-one-way piston stroke pump (1000ml)	238	4,00€

MOUNTING SET AND WALL MOUNTING PLATE

For mounting the dispensers on walls, service trolleys, etc. we offer our wall mounting plate and two mounting sets. The mounting set for drilling consists of 3x screws, 3x dowels, 3x washers, and a metal plate. The mounting set for gluing consists of 2x Tesa adhesive hooks, glue, and 4x screws. The mounting plate enables easy cleaning or replacement of the dispenser by simply sliding it on.



Item No.	EAN	Description	RRP
SD2005-70	8719992814671	Wall mounting plate for SD2005, SD4005	2,00€
SD2010-70	8719992814787	Wall mounting plate for SD2010, SD2015, SD4010	2,00€
SD2005-75	8719992814893	Mounting set for drilling for SD2005, SD2010, SD2015, SD6000	1,00€
SD2005-78	8719325697186	Tesa adhesive mounting set "No more drilling" for SD2005, SD2010, SD2015, SD4005, SD4010, SD5300, SD6000	7,00€

HOUSING FRONT COVER, HINGES, AND WINDOW

All parts of our dispensers can be replaced, therefore we offer you spare housing front cover and window. Replacement hinges, which allow the housing cover to be opened, can easily be pushed into the holders provided in the housing cover and rear panel when replacing the hinges.



Item No.	EAN	Description	WxHxD in mm	RRP
SD2005-30	8719992814626	Housing front cover (white) for SD2005	248x88	6,00€
SD2010-30	8719992814770	Housing front cover (white) for SD2010	260x98	6,00€
SD2015-30	8719325697667	Housing front cover (white) for SD2015	120x50	6,00€
SD2005-35	8719992814916	Window for housing front cover for SD2005, SD2010, SD2015	50x150x3	2,00€
SD2005-55	8719992814909	Hinges (2 pieces) for SD2005, SD2010, SD2015		2,00€

OPERATING LEVER

The solid arm levers fit the SD2005, SD2010, SD2015, SD5300, and SD6000.

The levers are available in:

- five colors: white, grey, blue, pink and green
- two lengths: -short (recommended for SD2005 and SD5300): 182cm
-long (recommended for SD2010, SD2015 and SD6000): 198cm




The arm levers are shipped in individual plastic packagings.

Item No.	EAN	Description	Length in mm	RRP
SD2005-90-b	8719992814725	Blue arm lever (short)	182	5,00€
SD2005-90-d	8719992814688	Grey arm lever (short)	182	5,00€
SD2005-90-g	8719992814701	Green arm lever (short)	182	5,00€
SD2005-90-p	8719992814718	Pink arm lever (short)	182	5,00€
SD2005-90-w	8719992814695	White arm lever (short)	182	5,00€
SD2010-90-b	8719992814831	Blue arm lever (long)	198	5,00€
SD2010-90-d	8719992814794	Grey arm lever (long)	198	5,00€
SD2010-90-g	8719992814817	Green arm lever (long)	198	5,00€
SD2010-90-p	8719992814824	Pink arm lever (long)	198	5,00€
SD2010-90-w	8719992814800	White arm lever (long)	198	5,00€
SD2005-90-k	8720254509419	Single carton packaging (short arm lever)		1,00€
SD2010-90-k	8720254509402	Single carton packaging (long arm lever)		1,00€

DRIP TRAY

Drip trays are for SD2005, SD2010, SD2015, SD5300, and SD6000. They keep the base clean by catching the soap, lotion, or disinfectant dripping from hands.


- suitable for all dispenser sizes
- assembly is done by simple plugging in into the holders provided in the housing
- available in the following colors: pink, green, blue, grey and white
- shipped in plastic packaging



Iten No.	EAN	Description		RRP
SD2005-20-b	8719992814947	Blue drip tray for SD2005, SD2010, SD2015, SD5300 and SD6000	150x20x100	4,00€
SD2005-20-d	8719992814923	Grey drip tray for SD2005, SD2010, SD2015, SD5300 and SD6000 currently not available	150x20x100	4,00€
SD2005-20-g	8719992814954	Green drip tray for SD2005, SD2010, SD2015, SD5300 and SD6000	150x20x100	4,00€
SD2005-20-p	8719992814664	Pink drip tray for SD2005, SD2010, SD2015, SD5300 and SD6000	150x20x100	4,00€
SD2005-20-w	8719992814930	White drip tray for SD2005, SD2010, SD2015, SD5300 and SD6000	150x20x100	4,00€
SD2005-20-k	8720254509396	Cardboard packaging		1,00€

EURO-BOTTLES AND BOTTLE HOLDER


Our dispensers are always delivered without bottles. For customers who need a bottle, we offer EURO standard bottles with 500ml or 1000ml volume. Bottles are made of white plastic, tasteless, and odorless, and they are refillable. The bottle holder in the housing ensures the safe positioning of the bottle.



Item No.	EAN	Description	RRP
SD2005-40	8719992814640	500ml EURO-bottle	2,00€
SD2010-40	8719992814657	1000ml EURO-bottle	2,00€
SD4005-45	8719992814350	Bottle holder for SD2015, SD4005, SD4010, SD5300 and SD6000	2,00€

EVAPORATION PROTECTION CAP


The evaporation protection cap is made of green plastic. Evaporation protection caps are suitable for all upright models, regardless of the dispenser size.



Item No.	EAN	Description	RRP
SD2005-41	8719992814985	Evaporation protection cap of green plastic for SD2005, SD2010, SD2015 and SD6000	2,00€

ADAPTER FOR ALL OPHARDT PLASTIC PUMPS

Two adapters are available for the use of the Ophardt plastic pumps. Especially the DHP disposable pump ensures that dispensers or hygiene packagings remain sterile. Adapters are suitable for all upright models, regardless of the dispenser size.



Item No.	EAN	Description	RRP
SD2005-60	8719992814992	Adapter for all Ophardt plastic pumps for SD2005, SD2010, SD2015 and SD6000	10,00€
SD2015-60	8719325697612	Adapter for hygiene packaging for SD2015, SD5300, and SD6000	8,00€

KEY AND LOCK

Adapter for hygiene packaging for SD2015, SD5300, and SD6000



Item No.	EAN	Description	RRP
SD2015-50	8719325697674	Key and lock for SD2015	2,00€
SD6000-50	8719325697902	Key for SD6000	1,00€
SD6000-55	8719325697919	Anti-theft protection for SD6000	5,00€

MANUAL OVERHEAD DISPENSERS

SD1015/SD1300/
SD1350/SD1400/
SD1450/SD1500

There are often customer requirements for robust and simple hygiene solutions for sanitary areas in buildings or public spaces. To satisfy these requirements, Euraneg offers a range of push-button and hand lever dispensers that have been developed for freely accessible locations or quick retrofitting.

The simple push-button and hand lever dispensers are our recommendations. The button dispenser SD1015 is good for a quick subsequent assembly. Designed as an overhead system, it can be easily adapted to a variety of different bottle types with a volume of up to 1000ml by using different adapters. It takes up little space and is fixed to any smooth surface by adhesive mounting.

The SD1400/1450 dispensers are suitable for frequently used areas. The two push-button dispensers have a classic, stainless steel housing, secured by an additional lock. This prevents the theft of disinfectant or at least makes it much more difficult. The SD1400 holds a container for disinfectants and soaps with a filling volume of 1000ml. The SD1450 model offers an even wider range of use. Since it consists of two independent containers with 500ml each, they can be filled differently.

The hand lever dispensers, SD1300/SD1350/SD1500, are also made of stainless steel, and they are waterproof and lockable. Their housings are classically designed, and their clear conception makes their maintenance and usage simple. The SD1300 and SD1350 differ from SD1500 only by their filling volume.

MANUAL MINI-DISPENSER SD1015

- The manual MINI version is:
- very compact
 - made of impact-resistant ABS plastic
 - for low viscosity disinfectants, disinfection gel, liquid soap, and lotion
 - color: grey/white
 - for different bottle sizes, dosing volume of approx. 1ml.
 - delivered and packed in the single carton without the pump and Drip tray, 2x screws, 2x dowels, and 2x washers for assembly
 - drip tray, disposable pump for 28mm or 32mm bottle threads as well as adapters for other bottle threads are available individually



Spare parts and accessories for the Manual Mini Dispenser can be found on pages 28 and 29

Item No.	EAN	Description	BxHxT in mm	RRP
SD1015	8719992814053	Manual MINI dispenser for different bottle sizes, including one pump	62x72x92	4,00€
SD1015-20	8719992814152	Drip tray with mounting set	140x75x130	4,00€

OVERHEAD SYSTEMS
SUSTAINABLE
CLEAR DESIGN
REFILLABLE

PUSH BUTTON DISPENSERS-SINGLE AND DOUBLE

SD1400/SD1450

The two push-button dispensers, SD1400 and SD1450, have a classic design, and each has a stable body made of brushed stainless steel. Due to the clear conception, their application is easy and self-explanatory. The SD1400 has a filling volume of 1000ml. The SD1450 model offers an even broader range of use. As it consists of two independent containers with 500ml each, they can be filled with different liquids.



SD1400

SD1450

Item No.	EAN	Description	RRP
SD1400	8719325697537	Push-button dispenser - single (1x1000m)	79,00€
SD1450	8719325697520	Push-button dispenser - double (2x500ml)	79,00€

HAND LEVER DISPENSERS

SD1300/SD1350/SD1500

The dispensers, SD1300/1350/1500, are robust hand lever dispensers for often daily use in public places. They have classic, matt stainless steel housings, secured with an additional lock. That makes theft considerably more difficult. The SD1300 has a filling volume of 650ml, while the SD1350 and SD1500, can be refilled with 1000ml. Compared to the SD1350, the SD1500 differs in its slimmer and higher silhouette and curved front.



SD1300

SD1350

SD1500

Item No.	EAN	Description	RRP
SD1300	8719325697506	Hand lever dispenser 650ml	79,00€
SD1350	8719325697513	Hand lever dispenser 1000ml	79,00€
SD1500	8719325697544	Hand lever dispenser 1000ml	79,00€



DISPENSERS FOR HYGIENE- PACKAGINGS

Upright manual and touchless systems

UPRIGHT DISPENSERS FOR HYGIENE PACKAGINGS

SD5050/SD5100/
SD5150/SD5200/
SD5300/SD5400/
SD5450/SD5500/
SD5550

This series offers manual and touchless dispenser systems for the different hygiene packagings of various disinfectant manufacturers.

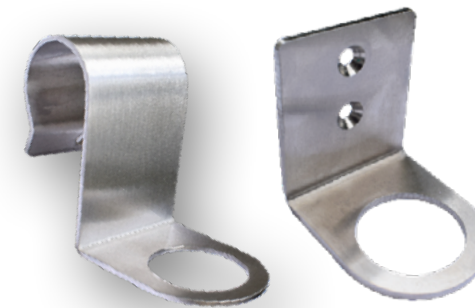
The models SD5500/SD5550 and SD5400/SD5450 are stainless steel wall or bed-mounted dispensers for hygiene packaging of all volumes. SD5200 and SD5300 are wall-mounted dispensers made of plastic. SD5300 is the manual dispenser with an option for drip trays and arm levers, and SD5200 has a touchless operation option. The models SD5050 and SD5100 are different from the wall brackets by the inclusion of the hygiene bottle in the dispenser. In those dispensers, bottles are not attached to the neck but placed in a basket.

The SD5100/SD5150 consists of a height-adjustable arm lever and a stainless steel basket that is mounted on the wall. It is available in two sizes for 500ml or 1000ml containers. The SD5050 is a modular dispenser that is extremely flexible and adaptable, whose core component is also a basket (500ml-1000ml) of plastic or stainless steel. The baskets can be extended modularly with arm levers, touchless attachments, an anti-theft device, drip tray, bed holder, and hygiene monitoring module. All baskets are equipped with clamping springs to ensure a firm hold of the bottles.

VARIOUS BRACKETS

MODULAR STRUCTURE

UPRIGHT SYSTEMS



SD5400/SD5450



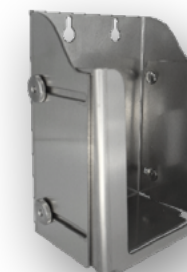
SD5300



SD5200



SD5500/SD5550



SD5050



SD5100

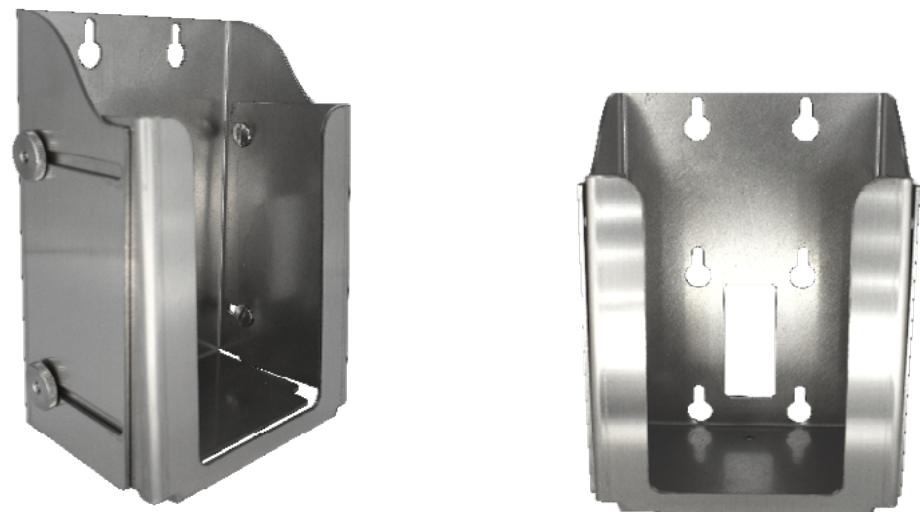
MODULAR MANUAL DISPENSERS

(Stainless steel)

SD5050

Practical sturdy holder for disinfectants or soaps. By mounting on the wall you create space on any desk. Whether in the hospital, restaurant, doctor's office or office this stainless steel holder provides the easiest way to integrate a disinfectant in the room. The discreet wall mount is made of powder coated metal and can be imprinted.

- Can be used anywhere: the discreet design is ideal for use in all public facilities.
- Safety: the stainless steel holder offers stability under heavy loads despite its light weight.
- Easy cleaning: the smooth surface structure and rounded edges allow for easy and sterile cleaning.
- Sustainability: the holder is moisture-resistant, waterproof, lightweight, non-toxic, tear-resistant, oil-resistant and acid-resistant.
- Easy to install: the soap dispenser holder can be easily mounted on the wall or tile with the recessed screw holes.
- Weight: 568 grams
- Dimensions: W(100) x H(140) x D(65-100)mm



Item No.	EAN	Description	RRP
SD5050	8719992814886	Modular manual dosing dispenser for hygiene packaging (stainless steel) consists of the basket with arm lever, bottle lock, mounting set, and bar	60,00€

MANUAL ARM LEVER DISPENSERS

SD5100/SD5150

The stainless steel dispensers SD5100/SD5150 are at the same time durable and elegant. We offer them in two different sizes: SD5100 with a basket for 500ml and SD5150 with a basket for 1000ml containers. The arm levers are adjustable in height to adapt to different bottle heights. Fixed to the wall, they are easy to maintain and to use.



Item No.	EAN	Description	RRP
SD5100	8719325697483	Manual arm lever dispenser made of stainless steel for 500ml containers	20,00€
SD5150	8719325697933	Manual arm lever dispenser made of stainless steel for 1000ml containers	22,00€

Available soon

WALL MOUNT FOR HYGIENE PACKAGING
WITH ARM LEVER/DRIP TRAY

SD5300

The SD5300 is the universal solution for mounting various hygiene packagings of different manufacturers. The holder is simply screwed or glued to the wall. A clamping system fixes the bottleneck of the hygienic packaging firmly with the housing. The bottle holder supports the bottle additionally from below. The SD5300 can be equipped with arm levers and drip trays in different colors: blue, green, pink, gray, and white. The levers are available in two lengths: 182mm (short) and 198mm (long).

NEW



Item No.	EAN	Description	WxHxD in mm	RRP
SD5300	8719325697490	Wall bracket for hygiene packaging	100x315x90	15,00€
SD4005-45	8719992814350	Bottle holder for SD2015, SD4005, SD4010, SD6000	50x60x15	2,00€
SD5300-60	8720254509006	Adapter for hygiene packaging for SD5300		7,00€
SD3015-75	8719992814541	Mounting set		1,00€
SD2005-78	8719325697186	Tesa adhesive mounting set "No more drilling"		7,00€

TOUCHLESS SENSOR DISPENSER
FOR HYGIENIC PACKAGING

SD5200

Like the SD5300, the SD5200 is designed to use various hygiene packagings from different manufacturers. A clamping system fixes the bottleneck of the hygienic packaging firmly with the housing of the sensor dispenser. Optionally, the SD5200 can be supplemented with a separate drip tray.

NEW



Item No.	EAN	Description	WxHxD in mm	RRP
SD5200	8719325697940	Touchless sensor dosing dispenser for hygiene packaging (ABS plastic)	105x135x150	69,00€
SD1015-20	8719992814152	Drip tray with mounting set	140x75x130	4,00€
SD3015-75	8719992814541	Mounting set		1,00€

WALL BRACKETS SINGLE OR DOUBLE

SD5500/SD5550

For customers who consciously forego arm levers, sensors, and drip trays, we offer our wall brackets in brushed stainless steel, white or black. They are furthermore available in two versions for one or two hygiene packagings. The wall brackets can be drilled or glued. To insert the hygiene pack, the pump must be separated from the bottle, and the opened bottle must be inserted from below and pushed through the ring-opening of the bracket. To cope with different diameters of the bottleneck we offer adapters to reduce the diameter of the opening of the bracket. Then the pump is screwed onto the bottle and is thus fixed. With the SD5550, Euraneg also offers a duplex version for two bottles. As an additional feature, both wall clamps also have a variably adjustable base plate. After loosening the fixing screw, they can be adjusted to different bottle sizes and thus support the bottle from below.

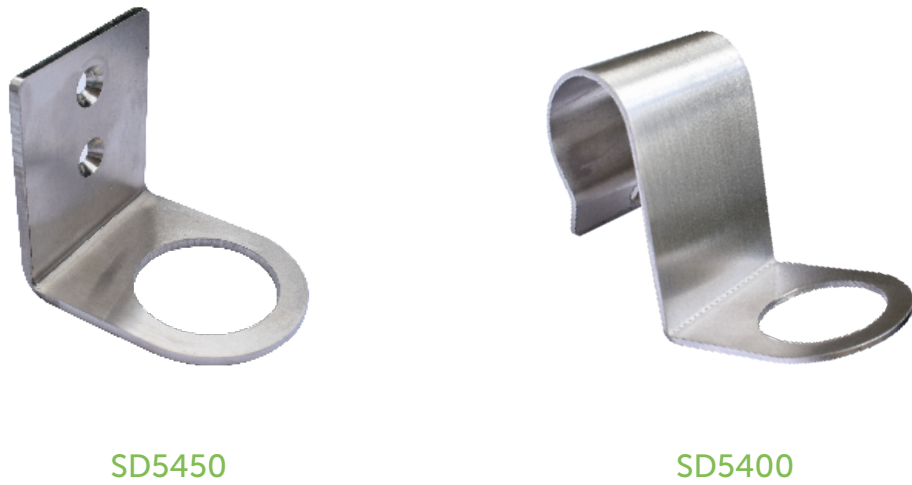


Item No.	EAN	Description	RRP
SD5500-d	8719992814404	Stainless steel wall mount - Single (brushed)	12,00€
SD5500-s	8719992814329	Stainless steel wall mount - Single (black)	12,00€
SD5500-w	8719992814190	Stainless steel wall mount - Single (white)	12,00€
SD5550-d	8719325697124	Stainless steel wall mount - Double (brushed)	15,00€
SD5550-s	8719992814060	Stainless steel wall mount - Double (black)	15,00€
SD5550-w	8719325697131	Stainless steel wall mount - Double (white)	15,00€
SD5500-40	8719325697216	Dispensing bottle (black glass) with dispensing foam pump	5,00€
SD5400-60	8719992814497	Adapter for reduction of the ring-opening diameter	2,00€

BED OR WALL BRACKETS

SD5400/SD5450

The SD5400/SD5450 bed or wall mounts for hygienic containers are simple and robust stainless steel bottle mounts. When a hospital bed or service trolley needs easy attachment for disinfection, the simple hook solution of the SD5400 is ideal. It can be easily attached to any bed rail or trolley handle. Afterward, you only have to push a disinfection bottle from below through the ring-opening and screw on a dosing pump: Ready to use! Alternatively, the SD5400 is available as a stable wall mounting. That is an ideal and space-saving solution for retrofitting in any area where hygiene is a priority, such as schools, daycare centers, swimming pools, and public facilities.



Item No.	EAN	Description	WxHxD in mm	RRP
SD5400	8719992814978	Stainless steel bed holder	50x76x95	11,00€
SD5450	8719325697155	Stainless steel wall bracket	50x62x60	11,00€
SD5400-60	8719992814497	Adapter for reduction of the ring-opening diameter		2,00€
SD5400-61	8719325697575	Adapter for reduction of the bed-ring-opening diameter		2,00€



SANITIZER STANDS, HYGIENE TOWERS & COUNTER DISPLAYS

Hygiene überall

SANITIZER STANDS, HYGIENE TOWERS & COUNTER DISPLAYS

SD100/SD110/
SD115/SD120/
SD130/SD140/
SD150/SD200/
SD210

NEW

Hand-hygiene has never been more important, and we aim to make it accessible to everyone and everywhere. Therefore we offer you our sanitizer stands and counter displays that allow you to put a preferable dispenser there where it's needed. They are especially good for highly-frequency areas. There is a possibility to choose between mounting a touchless or manual dispenser on the stand, or you can choose a hand or foot manual system with a container with up to 20l. The use of touchless dispensers is recommended for avoiding the risk of cross-contamination.

You can place sanitizer stands, hygiene towers, and counter displays in:

- toilets and elevators
- a retail store
- restaurants
- petrol stations
- railroads and airports
- fitness studios
- hospitals and medical practices
- companies, schools, and public buildings

The sanitizer stands and hygiene towers offer one more advantage, and that is the possibility to use them as a promotional space. You can design your sanitizer stands and hygiene towers according to your needs and choose between materials such as acrylic, stainless steel, or HPL.

MOBILITY

CUSTOMIZABLE

ADVERTISING SPACE



SANITIZER STANDS
(transparent or white)

SD100

The acrylic sanitizer stands, made for holding your dispenser wherever needed, are available in white or transparent. Both have the same construction: a square base and a 150cm high flat supporting pillar secured with a rear supporting beam. The stand comes as all our stands with predrilled holes and screws for our wall mounting plate (SD2005-70, SD2010-70). Whether you choose the transparent or white version, you will get a firm, resistant, and well-designed sanitizer stand. Regarding your preferences, the area of the sanitizer stand can be used for advertising or information signs that allow you to send a message to the user.



Item No.	EAN	Description	WxHxD in mm;	Weight	RRP
SD100	8719992814039	Desinfektionssäule aus Acryl (chemikalienbeständig) transparent für Armhebel- und Automatikspender	300x1480x400	9kg	240,00€
SD100-w	8719992814183	Desinfektionssäule aus Acryl (chemikalienbeständig) weiß für Armhebel- und Automatikspender	300x1480x400	7kg	240,00€

SANITIZER STANDS

SD120

The SD120 sanitizer stand is made of high-density laminate (HPE) and is therefore very robust and resistant. The main characteristic of this stand is the possibility of an easy and quick assembly. In less than five minutes, you can assemble the stand and place it in the groove of the round base without drilling and screwing. Therefore, the display area and the supports are inserted crosswise into each other. This sanitizer stand saves time, and it is easily portable. The top of the pillar is already provided with the holes for the wall mounting plate for the Euraneg dispensers. The height of the disinfection column is 120cm, and on one Euro-pallet up to twenty columns can be placed. There is an option to choose between different colors or patterns (wood, metal, etc.) of the laminate (the minimum quantity for customization is ten pieces of one design).

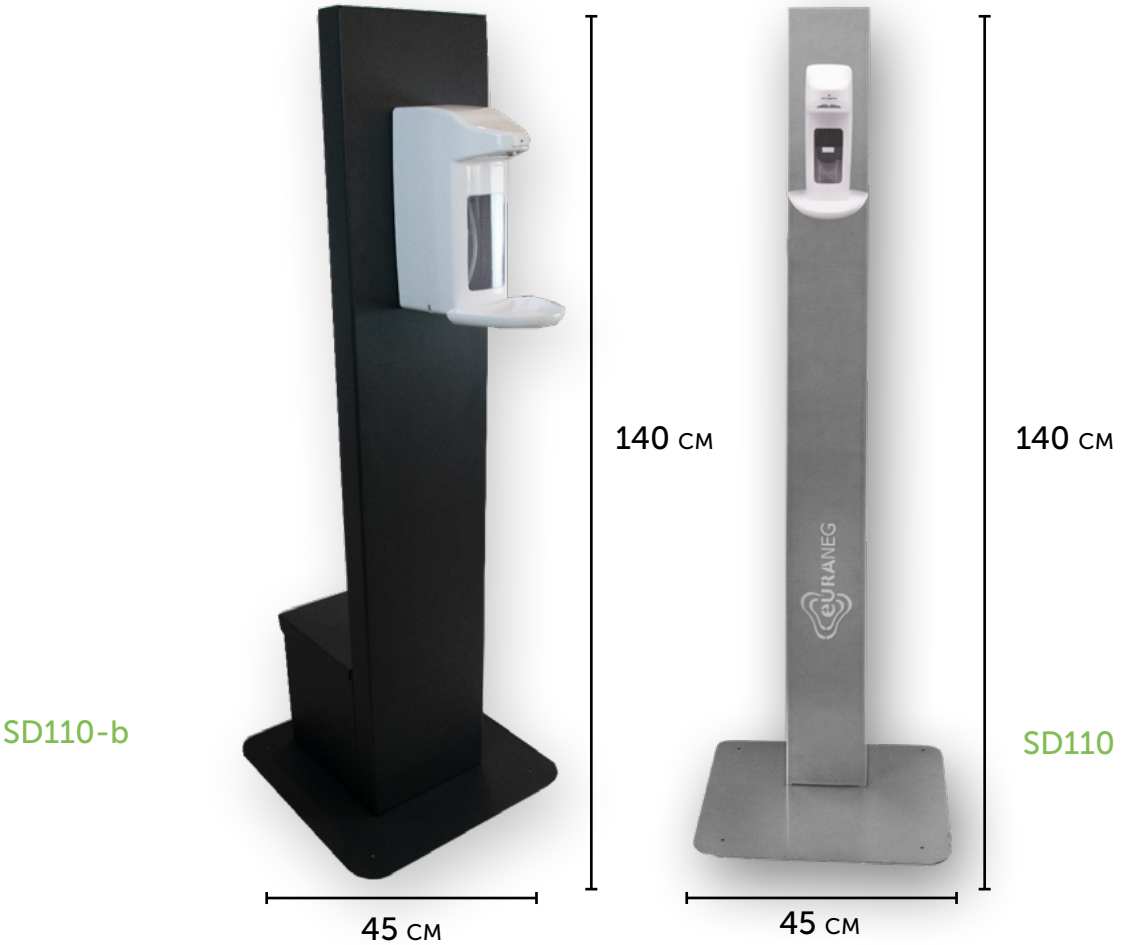


Item No	EAN	Description	WxHxD in mm	RRP
SD120-c	8719325697605	Sanitizer stand made of HPL in the desired color for arm lever and automatic dispensers (minimum order quantity is 10 pieces)	280x1500x300	240,00€
SD120-d	8719325697698	Sanitizer stand made of grey HPL for arm lever and automatic dispenser	280x1500x300	240,00€

SANITIZER STANDS

SD110/SD110-b

The SD110 is made of stainless steel, height 140cm, and characterized by stability and good visibility in any environment. For highly frequented locations, we offer an option for the extension with an additional module for containers 5-20l. The stands come as all our stands, with predrilled holes and screws for the mounting plate for Euraneg dispensers. We furthermore offer customizations with laser for the advertisement of logos (e.g. see Euraneg logo on the picture; the standard version is shipped without a logo or text on the column). Due to the compact design, several dispenser columns can be packed on one Euro-pallet.



Item No.	EAN	Description	WxHxD in mm	Weight	RRP
SD110	8719325697117	Stainless steel disinfection column for arm lever and automatic dispensers	450x1400x450	12kg	240,00€
SD110-b	8719325697803	Stainless steel disinfection column for arm lever and automatic dispensers (Black)	450x1400x450	12kg	240,00€
SD115-40	8719992814091	Option for 5-20l containers for stainless steel column			50,00€
SD115-70	8719325697926	Roller set for SD110 and SD115			30,00€

HYGIENE TOWER WITH FOOT CONTROL

SD115/SD115-b

The SD115 is made of stainless steel and comes with an integrated dispenser in it. Stainless steel makes this dispenser robust, firm, and resistant. With the 5-20l container option, the hygiene tower is ideal for high-frequency locations. The dispenser technology is integrated inside. There is an optional roller package that enables this hygiene tower to be mobile and easily ported to different locations. The foot control makes it an energy-efficient and inexpensive solution to avoid cross-contamination. With a height of 115cm, several dispenser columns can be packed on one Euro-pallet.



Item No.	EAN	Description	WxHxD in mm	RRP
SD115	8719325697964	Foot lever dispenser column made of stainless steel	400x1150x558	290,00€
SD115-b	8720618323118	Foot lever dispenser column made of stainless steel (black)	400x1150x558	290,00€
SD115-40	8719992814091	Option for 5-20l containers for stainless steel column		50,00€
SD115-70	8719325697926	Roller set for SD110 and SD115		30,00€

SANITIZER STAND

SD140

The SD140 disinfection stand is characterized by its slim silhouette, low weight, high mobility, and flexibility. Mounted on smooth-running wheels, it brings hand hygiene safely and quickly to where it is needed as a “stand-alone station” in the short term or as a supplement to existing disinfection stations in the event with large numbers of visitors. In addition to the drip tray integrated into the dispenser, we offer a magnetic drip tray in stainless steel that can be mounted separately on the drip tray holder. This drip tray holder also serves as a carrying handle if the stand cannot be rolled. The stand SD140 can be equipped with all Euraneg dispensers and is black powder-coated or available in various colors of your choice.

NEW



Item No.	EAN	Description	WxHxD in mm	RRP
SD140	8720254509426	Desi-Säule made from stainless steel (without rollers, drip tray and a drip tray holder)	250x1290x400	200,00€
SD140-10	8720254509433	Roller set currently not available		30,00€
SD140-20	8720254509464	Stainless steel drip tray with a drip tray holder		40,00€

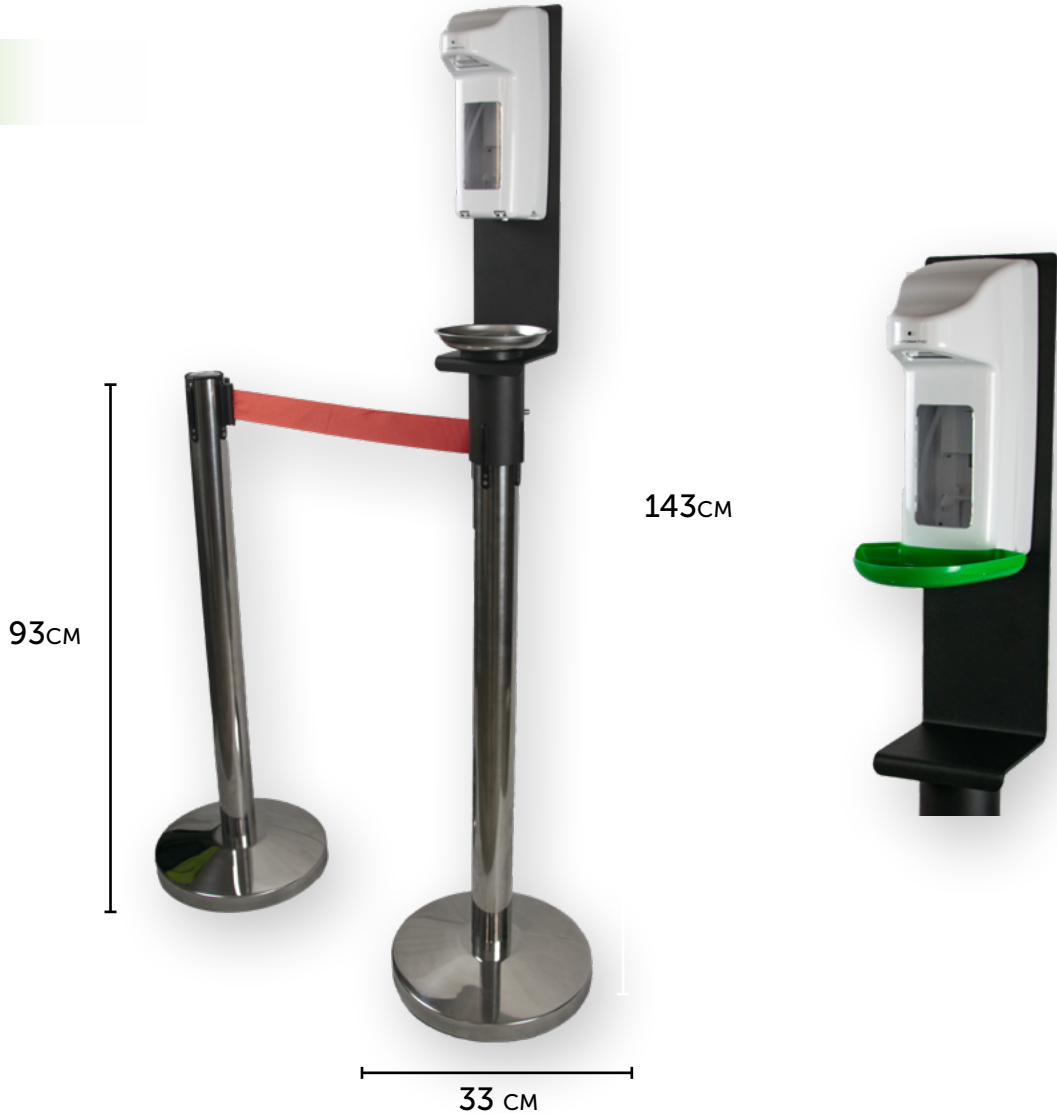
DESI-ON-TOP STAND

SD150

The DESI-ON-TOP stand, SD150, connects professional hand disinfection dispensers with personal guidance systems. It allows you to comply with both Covid-19 hygiene and distance rules in one. The DESI-ON-TOP is suitable for all places where flows of people need to be directed, such as waiting areas, event venues, airports, museums, government offices, hotels, etc. DESI-ON-TOP is available in stainless steel or black matt. The DESI-ON-TOP SD150 equipment package includes:

- two delineators incl. barrier tape (GTRW-ONE-2R-INOX)
- one DESI-ON-TOP attachment incl. magnetic drip tray in stainless steel for the delineator
- one touchless disinfectant dispenser 500 or 1.000ml

NEW

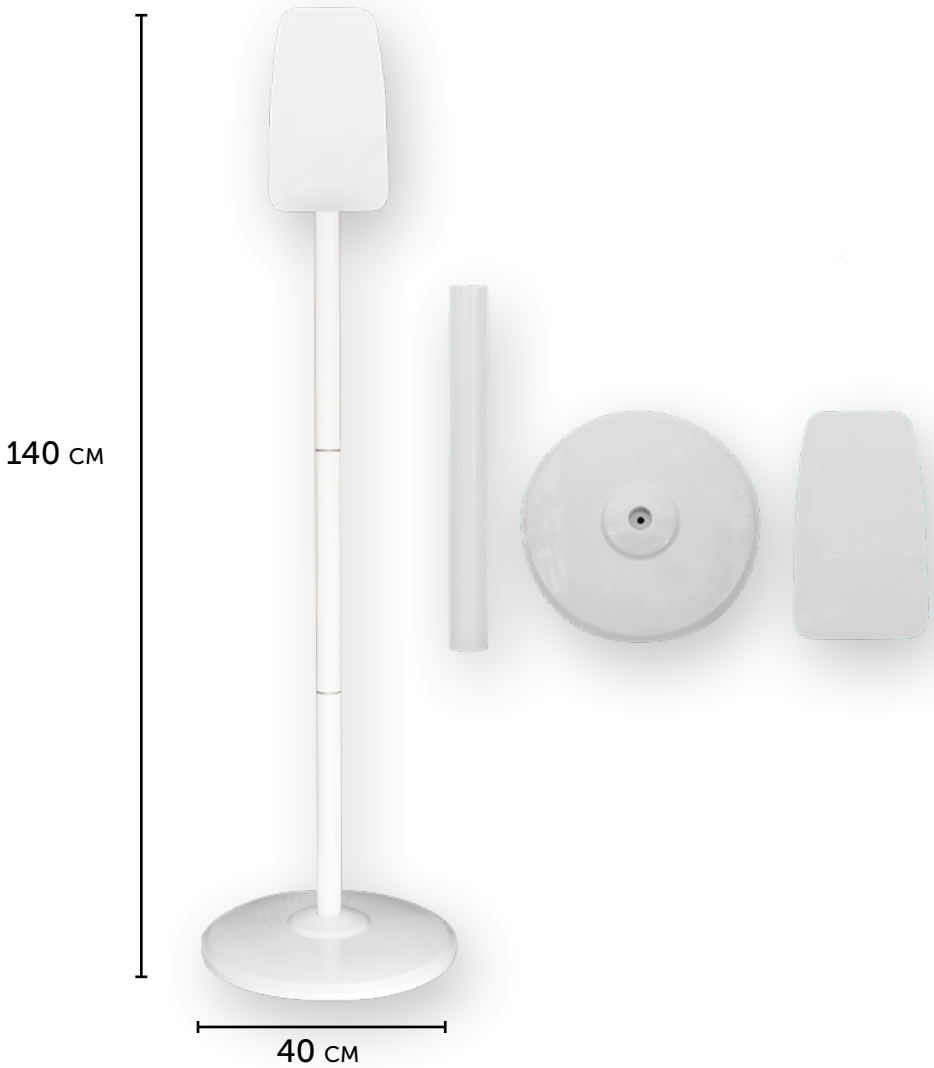


Item No.	EAN	Description	WxHxD in mm	RRP
SD150	8720254509440	DESI-ON-TOP stand made of stainless steel	330x1430x330	349,00€
SD150-10	8720254509457	Additional delineators	330x930x330	89,00€

SANITIZER STAND

SD130

The SD130 is a white stainless steel sanitizer stand that can be dismantled in three parts and is suitable for all Euraneg dispensers. Its height of 140cm, foldable head, and silhouette makes it easily portable and very practical. Because of the low weight, it is easy to be transported and set in the entrance of a hotel, meeting room, cinema, theater, or any other venue. Since it is dismantlable, it can be easily shipped in a box.



Item No.	EAN	Description	WxHxD in mm	RRP
SD130	8719325697193	Demountable round column made of stainless steel	400x1400x400	99,00€

COUNTER DISPLAYS

SD200/SD210

The counter displays are smaller stands for offices, reception, medical practices, restaurants, etc. They are suitable for dispensers with a small volume (up to 1l). There are two models available, transparent acrylic (SD200) suitable for modern places and small volume dispensers, and a more robust model in brushed stainless steel (SD210). They have an integrated flat drip tray, which avoids soiling of the bottom surface. The counter displays are provided for Euraneg wall mounting plates. Once mounted, the dispenser can be transported wherever it is needed.



Acrylic
SD200



Stainless steel
SD210

Item No.	EAN	Description	WxHxD in mm	RRP
SD200	8719992814046	Counter display made of transparent acrylic (resistant to chemicals) for arm lever and automatic dispensers	150x420x188	65,00€
SD210	8719325697582	Counter display made of stainless steel for arm lever and automatic dispensers	150x450x230	65,00€

TERMS AND CONDITIONS

I. General information

1. the following terms and conditions shall apply exclusively to the business relations with our customers and suppliers; any terms and conditions of our customers or suppliers which deviate from or contradict these terms and conditions shall only be binding on us if we acknowledge them in writing. 2. verbal or telephone agreements are only binding for us after written confirmation. 3. our offers are subject to change without notice; they must be accepted within six weeks of the date of the offer. The offers can also be accepted by placing an order. A contract but is not concluded until the order is confirmed or the order is executed. 4. set-off or retention by our customers is generally not permitted. 5. if a provision of these terms and conditions or a provision within the framework of other agreements is invalid, the validity of all other provisions or agreements shall not be affected. Should our terms and conditions or parts there contradicting the AGB act, they shall only apply to merchants. 6. delivery takes place exclusively in complete original packaging. 7) According to the Data Protection Act, we are allowed to store personal data within the scope of the purpose of the contractual relationship; the use of the data stored by us is exclusively according to the legally permissible and contractually necessary conditions. With the knowledge of these terms and conditions, our customer is considered to be informed that necessary data about him for the mutual business relationship has been stored. 8. The following applies to the business relationship in principle German law.

II. Prices

1. our prices are net; the statutory value-added tax is charged at the current rate percentage rate charged separately. 2. in principle, the prices valid on the day the order is placed shall be charged plus taxes. 3. our prices shall be a free delivery warehouse or ex-works unless another pricing has been expressly agreed. 4. in the case of customer-specific special productions (special products and/or their printing), the costs for cutting tools, printing plates, etc. are basically to be borne by the customer. 5. in case of a net order value of less than € 500.00, we will charge for the shipping costs incurred, above € 500.00 net order value the delivery will be carriage free.

III. Terms of payment

1. our invoices are payable within 20 days net cash or within 10 days with a 2% discount, regardless of the receipt of goods and the right of possible complaints. 2. the payment period starts from the day of the dispatch provision. 3. on the invoices the payment periods are additionally indicated, by which the invoice amount, possibly after deduction of discount, must be credited to one of our business accounts. For the timeliness of the payment, the day of the credit note on our account is relevant, not the submission of the payment document. 4. even if our customer has other terms and conditions, we are entitled to initially credit payments to any costs and interest incurred, then to be offset against the older open invoices. 5. if our customer is in default of payment, we shall be entitled to charge interest from the due date of our claim at the interest rate charged to us for open overdraft facilities. 6. if our customer does not meet his payment obligations or if we become aware of circumstances which may call his creditworthiness into question, we shall be entitled to make the entire remaining debt due and/ or to demand additional advance payment or the provision of security, in particular for orders which are still open. 7. in the aforementioned cases we are entitled to withdraw from all contracts not yet fulfilled in whole or in part and to claim damages for non-performance.

IV. Retention of title

1. the delivered goods shall remain our property until all obligations from our deliveries of goods, including any ancillary costs, have been met in full. 2. our customer is entitled to process the reserved goods in the ordinary course of business, to combine them with other items, and to sell them, as long as he is not in default towards us. 3. pledging or transfer of ownership by way of security is prohibited. 4. the customer hereby assigns to us his rights of ownership or co-ownership of processed or mixed goods; he is obliged, at our request, to notify the third parties involved of the assignment and to provide the information and documents necessary for the assertion of our claims. 5. the customer shall inform us immediately of any seizure or any other impairment of our rights by third parties.

V. Delivery

1. the delivery period is defined as the probable date of loading or delivery of the ordered goods, depending on the agreement 2. late delivery does not entitle the customer to withdraw from the contract or to assert claims for damages. 3. if the delivery period is exceeded, the customer may withdraw from the contract after the expiry of a grace period of at least eight weeks set by him. Further claims of the customer are excluded. 4. partial deliveries are permit-

ted and are considered independent transactions. 5. unforeseeable obstacles and delays due to force majeure entitle us to an appropriate extension of the delivery period after the reason for the obstacle has ceased to exist, without us being liable to pay compensation for any damage caused by the delay. 6. events which change or restrict the basis of the contract in whole or in part to a considerable extent, regardless of whether they occur at the customer's or our or our suppliers' premises, entitle us to adapt the contract to the changed circumstances in whole or in part, excluding compensation claims.

VI. Shipping

Dispatch shall always be at the risk and expense of the customer; the risk shall pass to the customer when the goods are handed over to the carrier, but at the latest when they leave the supplying factory or distribution warehouse. 2. in the absence of special instructions, we are entitled to choose the fastest and most cost-effective mode of dispatch ourselves at our best discretion without any assumption of liability. 3. additional costs for special shipping (express or express goods, etc.) shall be borne by the customer. 4. if goods ready for dispatch are not immediately called or collected or if the transport is temporarily or permanently impossible, the agreed purchase price is still due. 5. in the cases mentioned under 4. we are entitled to store the goods at our discretion at the expense and risk of the customer, whereby liability for damaging influences (transport, weather, etc.) on the goods is excluded.

VII. Warranty, Liability

1. the quality of the delivered goods depends decisively on the available raw materials; we are therefore only responsible for quality deviations and color changes if they could have been avoided under the market conditions. 2. we do not assume any warranty for the durability of printing inks on plastic and metal products. 3. complaints must be brought to our attention immediately after receipt of the goods, but at the latest after five working days; in the case of obvious damage, the type and extent of the damage must be noted on the consignment note/delivery bill and confirmed by the carrier's representative (driver). 4. defects or damage to part of the delivery do not entitle the customer to complain about the entire delivery or to delay payment of the invoiced purchase price in whole or in part. 5. in the event of timely and contractually compliant notification of defects, we shall, at our discretion, either provide a replacement or credit the equivalent value; further claims (damages, contractual penalties, etc.) are excluded. 6. the suitability of the goods delivered by us for a specific purpose cannot be guaranteed. 7. the customer's claims for damages in tort, in particular product liability, shall exist against us in the event of proven deliberate or grossly negligent damage and also only insofar as the manufacturer of the goods delivered by us is not liable for the same reasons. The same applies to claims of the customer from positive breach of contract 8. Warranty and compensation claims are generally excluded. if they are due to improper handling, maintenance, operation, or handling by the customer or third parties, as well as normal wear and tear or transport damage.

VIII. Place of performance, place of jurisdiction

The place of performance is our company headquarters in 93354 Siegenburg. The place of jurisdiction for all direct and indirect disputes arising from the contractual relationship is Siegenburg, irrespective of the amount in dispute. In the event of disputes, the local or regional court in 18237 Regensburg Germany, shall have jurisdiction at our discretion.

Follow us:



[linkedin.com/company/euraneg-gmbh/](https://www.linkedin.com/company/euraneg-gmbh/)



facebook.com/euraneg



youtube.com/euraneg-gmbh



All prices and technical data are subject to change without notice.
Prices valid until 31.12.2023